



Feature

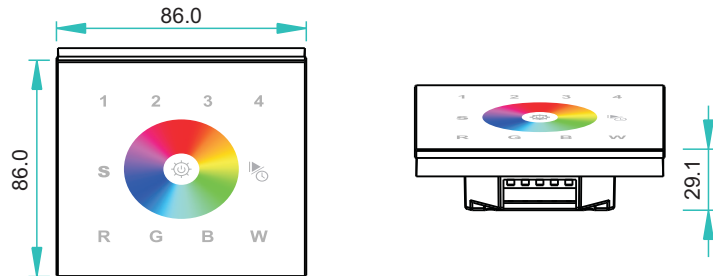
- Touch sensitive
- Glass interface(White & Black)
- Control 4 zones synchronously and separately
- Save up to 4 color in each zone



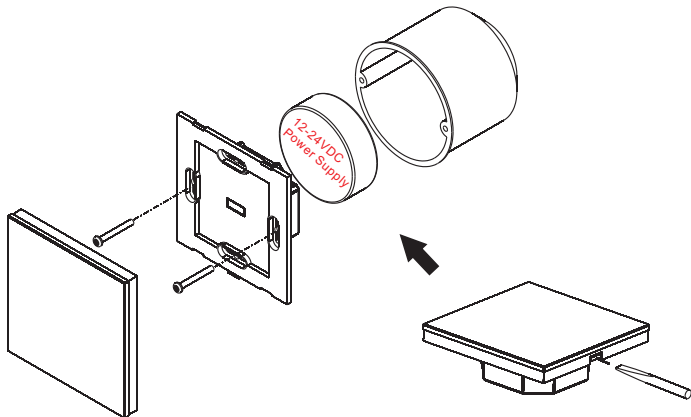
Parameter

Part No.	Operation Voltage	OUTPUT	DIMENSIONS ø/h (mm)
860428	12-24VDC	DMX512 Signal	86x86x29.1

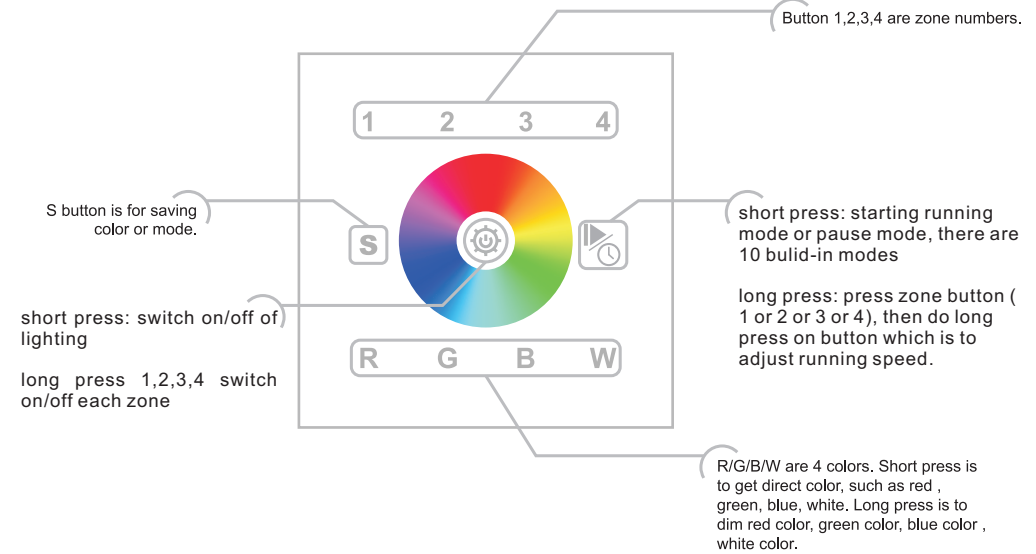
Product Size



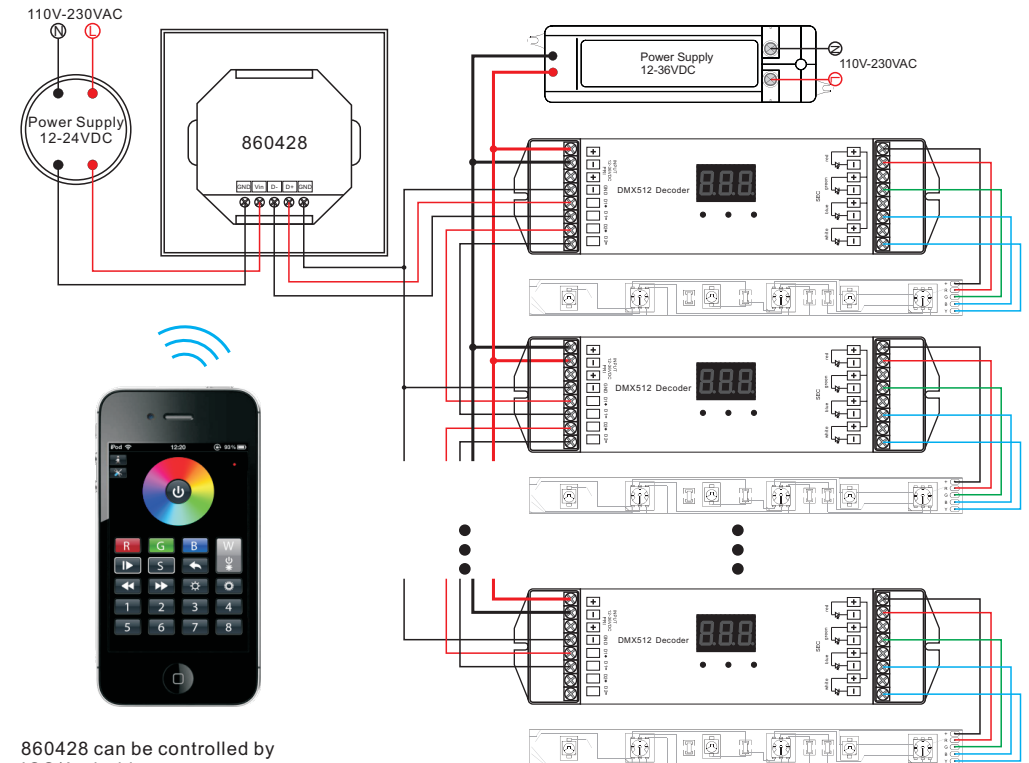
Installation



Button introduction



Wiring diagram



860428 can be controlled by
IOS/Android system

Operation

a. how to operate zone button

Each zone will get 4 addresses. Such as button one is address from 1-4, then button 2 is 5-8. Button 3 is 9-12, button 4 is 13-16. There are total 16 addresses.

Zone 1 address is from 1 - 4. Address .Zone 2 address is from 5 - 8.
Zone 3 address is from 9 - 12. Zone 4 address is from 13 - 16.

Take zone 1 as an example, address 1 indicates the channel of "R" (red); address 2 indicates the channel of "G" (green); address 3 indicates the channel of "B" (blue); address 4 indicates the channel of "W" (white / yellow / any color). So do the address from zone 2,3,4 (address: 5-8, 9-12, 13-16).


We control DMX controllers of each zone by different DMX address.


Note: the address of zone 1 is fixed from 1-4; the address of zone 2 is fixed from 5-8; the address of zone 3 is fixed from 9-12; the address of zone 4 is fixed from 13-16. So we only can change the address of DMX decoder, then corresponding zone can control DMX decoder separately or synchronously.

b. how to save color or mode

S Button can save the color from mode or save color when you touch color wheel.

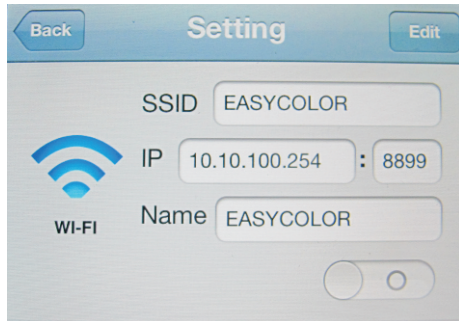
In "S" button, it saved "R/ G/ B" 3 colors in default. But with your operation, each zone you can save another 4 colors/modes replace those R/G/B colors.

Press any zone button----> press  button, mode runs, see favorite mode---> press "S" button over 3 seconds until indicator in touch panel turns into pink and the led light blink, Then it saved successfully.


Press any zone button----> touch  color wheel, see favorite color---> press "S" button over 3 seconds until indicator in touch panel turns into pink and the led light blink, Then it saved successfully.

Recall the color and mode you saved: choose zone number----> short press S

IOS or android system connection to the 860428



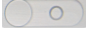
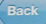
a. Open wifi connection setting interface, connect your phone to EASYCOLOR network.

b. Open EASYCOLOR installed on the phone, press  to the setting interface, and enter the following:

SSID:

IP:

Name: (the name you want or don't enter anything.)

c. Press button  to turn it on, and press button  to back to the main operation interface.

Safety & Warnings

- 1) The product shall be installed and serviced by a qualified person.
- 2) IP20. Please avoid the sun and rain. When installed outdoors, please ensure it is mounted in a water proof enclosure.
- 3) Always be sure to mount this unit in an area with proper ventilation to avoid overheating.
- 4) Please check if the output voltage of any LED power supplies used comply with the working voltage of the product.
- 5) Never connect any cables while power is on and always assure correct connections to avoid short circuits before switching on.
- 6) Please ensure that the cable is secured tightly in the connector
- 7) For update information please consult your supplier.

Warranty Agreement

1) We provide lifelong technical assistance with this product:

- 3-year warranty. We print date on every products, for example :1125 means year 2011, week 25. The warranty is for free repair or replacement and covers manufacturing faults only.

- For faults beyond the 3-year warranty we reserve the right to charge for time and parts.

2) Limited Warranty

- Any defects caused by wrong operation.

- Any damages caused by unauthorized removal, maintenance, modifying, incorrect connection and replacement of chips.

- Any damages due to transportation, vibration etc. after purchase.

- Any damages caused by earthquake, fire, lightning, pollution and abnormal voltage.

- Any damages caused by negligence, inappropriate storing at high temperatures and humidity or near harmful chemicals.

- Product has been updated

3) Repair or replacement as provided under this warranty is the exclusive remedy to the customer.